

ANN ROAD PLAZA

7890 W. Ann Rd Las Vegas 89149



SPECIFICATIONS

- **Location:** 7890 Ann Road
- **Space Availability:** 1,594 square feet
- **Rate:** 2.25 sq/ft. NNN
- **Tenant Improvement Allowance:** See Agent
- **Occupancy:** Available now
- **Traffic Count:** 10,800 cars per day
- **CAMS:** Estimated at \$0.45 per sq/ft.
- **Lease Term:** Open

HIGHLIGHTS

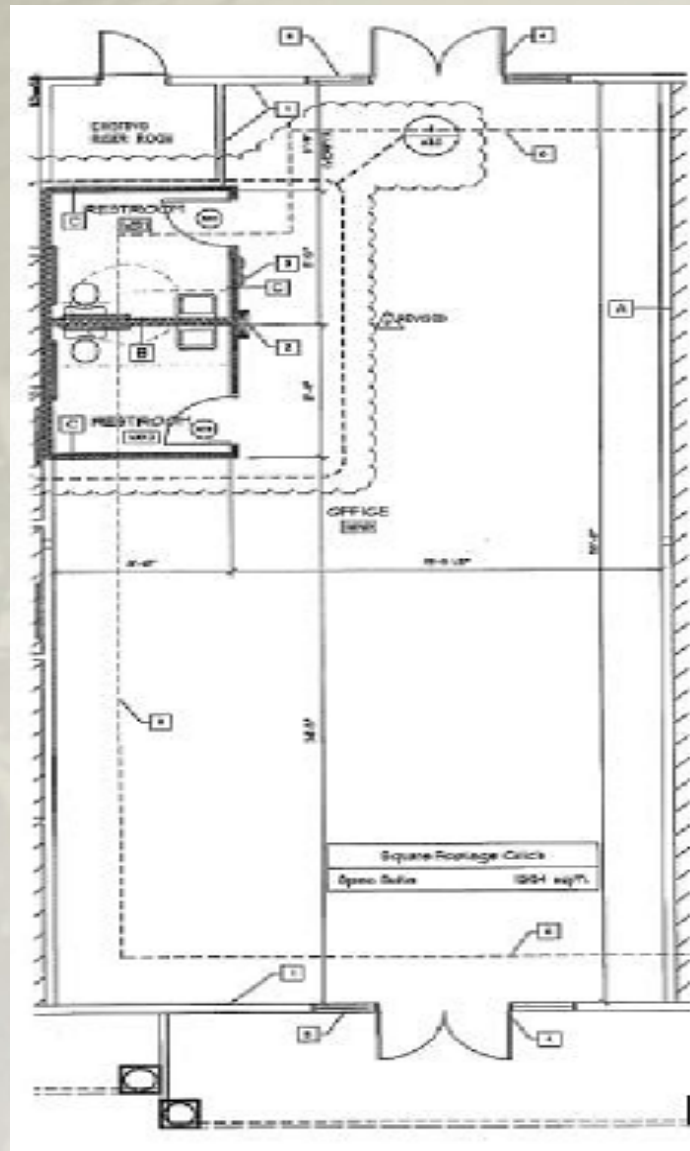
- Free Rent with Long Term Lease
- Great Street Visibility
- Lots of Parking
- Located on Hard Corner
- High traffic counts
- Vanilla Shell , Restrooms and HVAC
- Located near community of Painted Desert
- Available now!

FOR INFORMATION CONTACT:
JOE PLANTE 702-997-5811
JOE@DAPPERDEVELOPMENT.COM



ANN ROAD PLAZA

7890 W. Ann Rd Las Vegas 89149



Floor Plan

FOR INFORMATION CONTACT:
JOE PLANTE 702-997-5811
JOE@DAPPERDEVELOPMENT.COM

ANN ROAD PLAZA

7890 W. Ann Rd Las Vegas 89149



Site Map

FOR INFORMATION CONTACT:
JOE PLANTE 702-997-5811
JOE@DAPPERDEVELOPMENT.COM



ANN ROAD PLAZA

7890 W. Ann Rd Las Vegas 89149



Aerial Map

FOR INFORMATION CONTACT:
JOE PLANTE 702-997-5811
JOE@DAPPERDEVELOPMENT.COM

